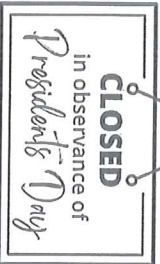


FEBRUARY 2025

PACAREERLINK® LUZERNE COUNTY AT WILKES-BARRE



MONDAY	TUESDAY	WEDNESDAY	THURSDAY	FRIDAY
3 1:45 pm: Digital Fundamentals	4 1:45 pm: Spanish Ace the Interview (As la entrevistista)	5 11:15 am: Ace the Interview 12:45 pm: Spanish Resume Writing (Creando un curriculum) 1:45 pm: WIOA Orientation 1:45 pm: Digital Fundamentals	6 10:45 am: WIOA Orientation 12:45 pm: Resume Writing	7 10 am: Discovering Your Career Path
10 1:45 pm: Digital Fundamentals	11 1:45 pm: Spanish Ace the Interview (As la entrevistista)	12 11:15 am: Ace the Interview 12:45 pm: Spanish Resume Writing (Creando un curriculum) 1:45 pm: WIOA Orientation 1:45 pm: Digital Fundamentals	13 8:45 am: Job Club 10:45 am: WIOA Orientation 12:45 pm: Resume Writing	14
17 <div style="border: 1px solid black; padding: 5px; display: inline-block;">  </div>	18 12 pm: Wellness to Work: Self-Love for Success (Virtual) 1:45 pm: Spanish Ace the Interview (As la entrevistista)	19 11:15 am: Ace the Interview 12:45 pm: Spanish Resume Writing (Creando un curriculum) 1:45 pm: WIOA Orientation 1:45 pm: Digital Fundamentals	20 10:45 am: WIOA Orientation 12:45 pm: Resume Writing	21
24 1:45 pm: Digital Fundamentals	25 1 pm: LCCC Adult Education Program Virtual Open House 1:45 pm: Spanish Ace the Interview (As la entrevistista)	26 11:15 am: Ace the Interview 12:45 pm: Spanish Resume Writing (Creando un curriculum) 1:45 pm: WIOA Orientation 1:45 pm: Digital Fundamentals	27 8:45 am: Job Club 10:45 am: WIOA Orientation 12:45 pm: Resume Writing	28

LOCATION:
 32 East Union Street
 Wilkes-Barre, PA 18701
 PHONE: 570-822-1101
 FAX: 570-826-2443
 TTY: 570-826-2438

BUSINESS HOURS:
 Mon/Tues/Thurs/Fri
 8:00 am- 4:30 pm
 Wednesday
 9:30 am- 4:30 pm

www.pacareerlink.pa.gov
www.careerlinkwilkesbarre.org

A proud partner of the American Job Center network

HIRING EVENTS FEBRUARY 2025

PA CareerLink® Luzerne County at Wilkes-Barre



INFORMATION

Stop by our office for the upcoming hiring events listed on the calendar.

We are located at
 32 East Union Street
 Wilkes-Barre, PA 18701
 Phone: 570-822-1101
 TTY: 570-826-2438

For a complete list of job opportunities visit www.pacareerlink.pa.gov. Check out our events page at www.careerlinkwilkesbarre.org

If you would like to receive our weekly Hot Jobs via text message, text JOIN to 570-515-6896

Program funded with federal dollars. For more information, visit bit.ly/stevens-amendment. EO employer/programs.

A proud partner of the



MONDAY

February 3
 9 am - 12 pm US Bureau of Prisons

TUESDAY

February 4
 February 11
 1 pm - 4 pm PA Liquor Control Enforcement

WEDNESDAY

February 5
 February 12

THURSDAY

February 6
 9 am - 12 pm Community Options



February 17
 Office closed in observance of President's Day

February 18

February 19

February 20

February 24

February 25

February 26

February 27



The initiative is being led by:



© 2018 CareerLink of the American Career Center network

How to access SkillUp™ PA

Pennsylvania's new online
learning platform

ABOUT

SkillUp™ PA provides access to
NO COST online job skills
training to Pennsylvanians.

Courses are available by
simply registering for a free
account on the PA CareerLink®
website.

5 EASY STEPS TO GET STARTED

1 Register as a new user or log
into PA CareerLink®

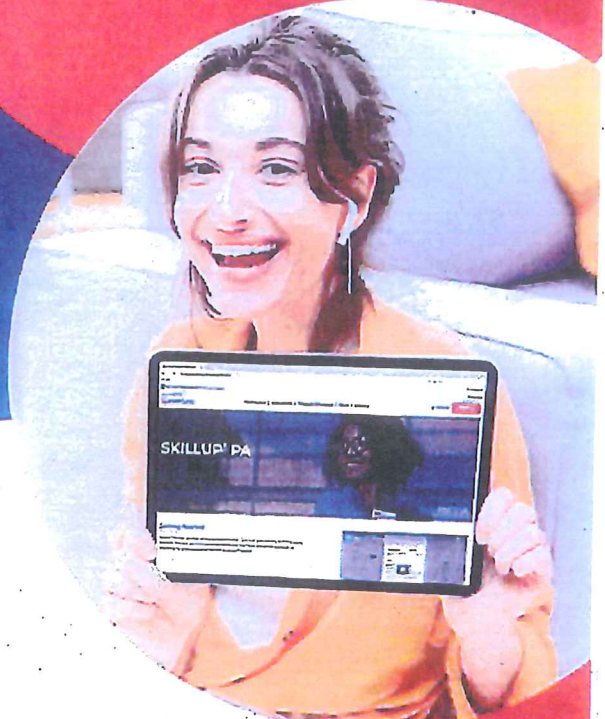
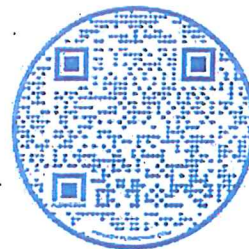
2 Click on the green banner on
your home page

3 Follow the prompts

4 Create a password specific
to your SkillUp™ PA portal

5 Complete an assessment or
search courses!

**SIGN-UP
TODAY**

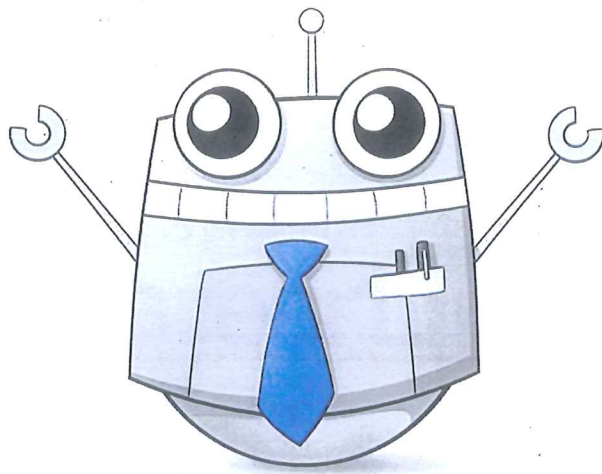


The Governor's Office has supported the SkillUp™ PA Initiative by allocating Pennsylvania state tax dollars to spearhead the implementation of this online learning portal. The Pennsylvania Department of Labor & Industry was competitively awarded federal tax dollars through the United States Department of Labor - Employment and Training Administration CAREER Material Dislocated Worker Grant (NDWG) totaling \$3 million. The CAREER NDWG is entirely federally funded, and 100% of these funds will be utilized to purchase licenses and further implement the SkillUp™ PA Initiative over a multi-year period.



Why take small chances,
When you can have a

biginterview



Big Interview is a **FREE** service through the CareerLink website

A virtual interview from any device with a camera

Practice your interview skills

Access a question library, answer builder and training tool

Play interview roulette to keep you on your toes

Search general interviews, industry interviews or competency interviews

Register Today: WWW.PACARERLINK.PA.GOV

A proud partner of the American **JobCenter** network

Follow Us on Social Media



SCAN ME

Let's Get Connected for Our Latest News & Updates



on Facebook @PA CLLuzerneCounty



on LinkedIn @PA CareerLink Luzerne County



on Instagram @paclluzerne



on X @paclluzerne



on YouTube @PA CareerLink

75 N. Laurel Street, Hazleton, PA 18201 • E. Union Street, Wilkes-Barre, PA 18701 • careerlinkluzerne.org

A proud partner of the  Center network

The PA CareerLink® is an equal opportunity employer/program. Auxiliary aids and services are available upon request to individuals with disabilities. Program funded with federal dollars. For more information, visit bit.ly/stevens-amendment.



A proud partner of the American Job Center network

JOB SEARCH WEB SITES

Including County, State and Federal job sites

Pennsylvania CareerLink®	www.pacareerlink.pa.gov
Accounting and Finance	www.financialjobbank.com
Age-Friendly Employers.....	www.simplyhired.com/a/special-searches/fifty-plus
Army Civilian Jobs	www.armycivilianservice.com
CareerBuilder.....	www.careerbuilder.com
CareerOneStop.....	www.careeronestop.org
Construction Jobs	www.constructionjobs.com
Federal Jobs	www.usajobs.gov
Human Resources.....	www.shrm.org
Indeed.....	www.indeed.com
JobBankUSA.....	www.jobbankusa.com
Law Enforcement, Firefighter, EMS Jobs	www.911hotjobs.com
Linkedin.....	www.linkedin.com
Link Up.....	www.linkup.com
Luzerne County Jobs	www.luzernecounty.org
Monster.....	www.monster.com
National Labor Exchange.....	www.usnlx.com
Older Workers.....	www.retirementjobs.com
Outdoor/Environmental Jobs	www.coolworks.com
PA State Employment	www.employment.pa.gov
PENNDOT	www.penndot.gov
Restaurant Jobs.....	www.jobsonthemenue.com
Retail Jobs.....	www.workinretail.com
Simply Hired.....	www.simplyhired.com
Snag-A-Job.....	www.snagajob.com
Teaching Positions.....	www.pareap.net
Technology Jobs.....	www.dice.com
The Ladders (Professional Jobs Only-May Ask for Fee).....	www.theladders.com
Tobyhanna Jobs	www.tobyhanna.army.mil
United States Postal Service	www.usps.com
US Army Corps of Engineers.....	www.usace.army.mil
US Jobs.....	www.us.jobs
Vault	www.vault.com
Veterans.....	www.recruitmilitary.com
Veterans	www.veterans.gov
ZipRecruiter.....	www.ziprecruiter.com

PA CareerLink® Luzerne County at Wilkes-Barre
32 East Union Street, Wilkes-Barre, PA 18701
570-822-1101/TTY: 570-826-2438

Program funded with federal dollars. For more information, visit bit.ly/stevens-amendment. EO employer/programs.

Pennsylvania CareerLink®

A proud partner of the American Job Center network

LABOR MARKET AND CAREER INFORMATION WEBSITES

www.pacareerlink.pa.gov

- Local and statewide job openings
- Resume creation
- Job seeker and business web resources
- Training provider information

www.onetonline.org

- Comprehensive occupational descriptions
- Interactive application for exploring and searching occupations

<http://www.pa.gov/en/agencies/dli/resources/statistic-materials/products.html>

Center for Workforce Information and Analysis

- Wages and industry data
- State and county economic and labor force summaries
- High priority occupations

www.careeronestop.org

- Employment information and inspiration
- Manage your career
- Tools to help job seekers, students, businesses, and career professionals

www.myskillsmyfuture.org

- Personalized career suggestions based on your interests/level of work experience

www.mynextmove.org

- Skill transferability tool to learn more about career options

PA CareerLink® Offices in Luzerne County

32 East Union St
Wilkes-Barre, PA 18701
570-822-1101
TTY – 570-826-2438

75 N. Laurel St
Hazleton, PA 18201
570-459-3854
TTY – 570-459-3934

Program funded with federal dollars. For more information, visit bit.ly/stevens-amendment. EO employer/programs.

Unemployment Compensation Contact Information

Pennsylvania UC Website:

www.uc.pa.gov

UC and General Questions

Website: www.uc.pa.gov

Phone: 1-888-313-7284 – Monday-Friday from 8 a.m. to 4 p.m.

Email: UCHelp@pa.gov

PAULA Virtual Assistant: 1-833-755-0882. For general questions.
Chatbot available on www.uc.pa.gov website.

UC Connect In-Person Appointment and Login Support Line

1-855-284-8545

UC Staff are available for in-person appointments at PA CareerLink locations.
Staff can assist claimants with:

- UC in-person appointment scheduling.
- ID.me question and support.
- Password resets and address changes.
- You will be asked to provide your name, phone number, and email address.
- You will receive a text or e-mail reminder a few days before your appointment.

PAT Automated System - for filing weekly claims.

1-888-255-4728

Spanish: 1-877-888-8104

PA Treasury – for changes to your payment method or tracking a lost payment.

1-877-869-1956

Fax: 1-717-214-0581

Money Bank Prepaid Debit Card Account

1-888-292-0059

PA Fraud Hotline

1-800-692-7469

Employer UC Service Center – for benefits and claims.

1-833-728-2367

Employer Tax Services

1-866-403-6163

Email: uc-news@pa.gov

Videophone Services – for individuals using American Sign Language.

Wednesdays 8 a.m. to Noon and Fridays Noon to 4 p.m.

1-717-704-8476

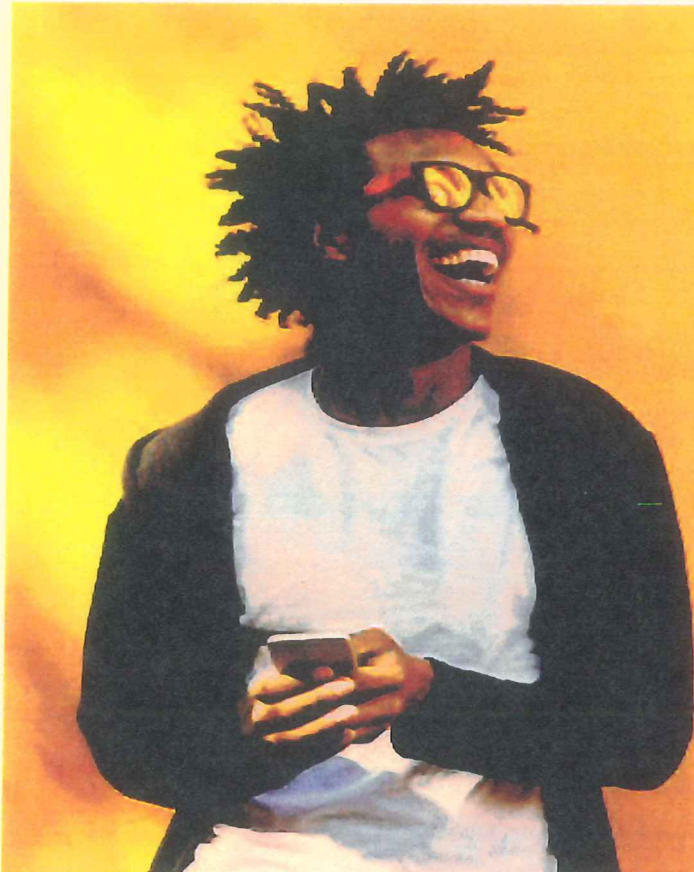
FREE Computer Class!!



Mondays & Wednesdays from 2:00 pm - 4:00 pm

PA CareerLink
32 East Union Street, Wilkes-Barre

Register
before each
class!



Learn how to:

- ◆ Create documents, slides, & spreadsheets
- ◆ Develop basic computer skills
- ◆ Navigate the internet and social media
- ◆ Build a safe, responsible online presence
- ◆ Communicate via email & DM
- ◆ Find and evaluate information online
- ◆ Use technology in the workplace, classroom, and home

Digital Fundamentals @ CareerLink Wilkes-Barre

> *Start learning today* <
JOIN our computer class for job seekers who want to use technology in the workplace, the classroom, and in their personal lives.



CONTACT

Mia McJunkins
@ CareerLink WB
570/822-1101

mmcjunkins@careerlinkluzerne.org